



FOODSERVICE

# FOODSERVICE

Product Catalogue





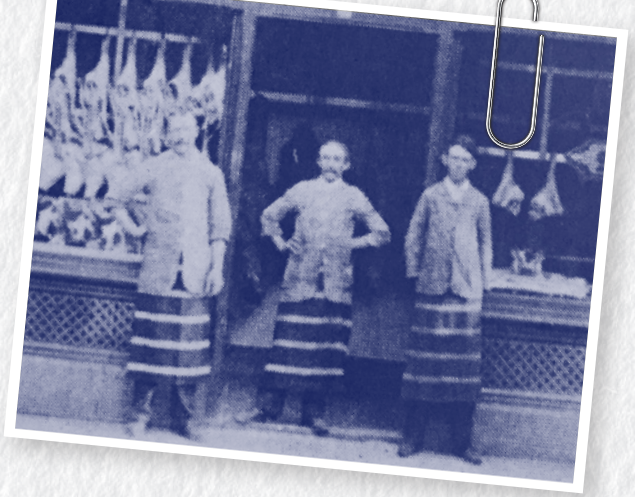
**CODE: 91881**  
**KRC PEPPERONI SALAMI SLICED**

**COVER SHOT**  
**CODE: 91876**  
**KRC BACON MIDDLE RASHER**  
**RINDLESS**

# CONTENTS

<b>OUR STORY &amp; OUR HISTORY</b>	<b>3</b>
<hr/>	
<b>BACON</b>	<b>5-6</b>
Rind On	
Rindless	
Bacon Pieces	
Streaky	
Short Cut	
<hr/>	
<b>HAM</b>	<b>7-9</b>
Champagne	
Soccerball	
Virginian	
Easy Cut	
Boneless Hams	
<hr/>	
<b>SLICED &amp; SHAVED MEATS</b>	<b>10-11</b>
Sliced Meats	
<hr/>	
<b>SALAMI</b>	<b>12</b>
<hr/>	
<b>BEEF AND OTHER MEATS</b>	<b>13-14</b>
<hr/>	
<b>PIZZA TOPPINGS</b>	<b>15-16</b>
<hr/>	
<b>SAUSAGES &amp; FRANKS</b>	<b>17-19</b>
Skinless Franks	
Skin On Franks	
Chipolatas	
Saveloys	
Cocktails	
<hr/>	
<b>BULK KNOBS</b>	<b>20</b>
<hr/>	
<b>CONTINENTALS</b>	<b>21 -22</b>
Chorizos	
Kransky	
Kabana	
<hr/>	

# OUR STORY



## Discover DON®

Our philosophy has always been to apply the craftsmanship of traditional recipes with quality ingredients to provide Australians with authentic Smallgoods. Our story began in 1947 with Australian butcher R.J. Gilbertson. Out of a small Essendon store, he began producing a range of processed meats with the help of European master craftsmen that stayed true to the curing traditions of their homelands. Through his resolute commitment to quality, his business became one of the biggest names in the Australian food landscape, DON®. Since then, we have endeavoured to preserve our traditional methods and meet the exceptionally high standards set by our founder. Today DON® is one of Australia's largest Smallgoods manufacturers, proudly producing a beloved range of Smallgoods from our Castlemaine site in Victoria. We're a leading regional employer and have a steadfast commitment to sustainability and care in everything we do. The culmination of our story is Smallgoods known for that big, authentic DON flavour. That's why we're so proud to say... IS DON. IS GOOD.

## The history of KR Castlemaine®

KR Castlemaine® has a rich history in Australia, starting over 100 years ago when Darling Downs Bacon Corporative Company Limited and Castlemaine Bacon Company successfully launched their brands, KR® and Castle®, nationally. Their merger in 2003 formed KR Castlemaine®, now proudly a part of the DON Smallgoods portfolio. Characterised by country style flavours, KR Castlemaine® ham, bacon and Smallgoods bring simple, honest flavours to every meal occasion.

## Why buy from DON® Foodservice

DON Foodservice brands are iconically Australian. For over 100 years, Aussie chefs have loved the premium taste, quality and expertise we bring to the kitchen.

Since day one, fostering authentic relationships has been our priority - a tradition we proudly continue today. Whether you're a blue-chip company dishing up feeds across the nation or a family-owned cafe servicing your unique local community, we are here to help! Our passionate sales team is on standby to share our expert knowledge tailored to your business needs.

We have a legacy of building long-term, steadfast relationships with our local and global supply partners ensuring we can confidently offer you unrivaled supply chain certainty with minimal risk for you. As we foster these relationships into the future, we have our sights set on growing our industry-leading sustainability initiatives that have made us community champions.

Thanks to these local and global partnerships, DON Foodservice has been able to help Aussie businesses develop fresh and innovative menus to meet the needs of Australia's dynamic palate.





CODE 90914  
OTTO WURTH CHEESE KRANSKY

# BACON

We don't have to tell you how good bacon is, especially when it's KRC bacon.



**CODE: 87345**  
**KRC STREAKY BACON**



## KRC BACON MIDDLE RASHER RINDLESS

A full flavoured favourite. Rindless middle pork cuts are cured, hardwood-smoked and cooked to make this bacon a go-to ingredient any time of day.

**CODE: 91876** | 2.5kg | 2Units | 90 Cartons |



## KRC RINDLESS SHORT CUT BACON

All the good stuff. Lean, full flavoured and versatile, this short cut bacon is made from pork loin, cured, smoked and cooked.

**CODE: 72706** | 2.5kg | 2Units | 90 Cartons |



## DON LONG RINDLESS MIDDLE BACON

The DON® breakfast classic. Start the day on a high note with our rindless middle bacon. Prepared from pork middle cuts this sweet staple is a must-have for every morning.

**CODE: 49006** | 2.5kg | 2Units | 90 Cartons |



## DON AUSTRALIAN HARDWOOD SMOKED BACON

A rustic style short cut bacon. This Australian pork is cured, smoked, cooked and ready for your next creation.

**CODE: 102152** | 2.5kg | 2Units | 90 Cartons |



### KRC LONG RIND ON MIDDLE BACON

The backbone of breakfasts. Carefully selected rind-on middle cuts are trimmed, cured and then smoked to perfection before being sliced.

**CODE: 91873** | 2.5kg | 2Units | 90 Cartons |



### KRC STREAKY BACON

Enjoy the robust, indulgent flavour that comes from KRC cured bacon bellies, smoked and sliced for your convenience.

**CODE: 87345** | 2.5kg | 2Units | 90 Cartons |



### DON REAL DICED BACON PIECES

Real Diced Bacon is ready to use straight from the pack. Use it as a topping for scrambled eggs, roasted potatoes, or add a special finishing touch to your spaghetti carbonara

**CODE: 79768** | 2kg | 6Units | 48 Cartons |

### PIONEER BUDGET BACON

Conveniently packaged bacon off-cuts ready to elevate any meal needing a savoury inclusion.

**CODE: 90834** | 1kg | 10Units | 60 Cartons |



### KRC BACON STYLE DICED BACON PIECES

A lean and consistent product of superior presentation with numerous applications from backyard to bakery.

**CODE: 90120** | 2kg | 6Units | 48 Cartons |



**CODE: 79768**  
**DON REAL DICED BACON PIECES**



CODE: 90140  
KRC PREMIUM VIRGINIAN HAM HALF

# HAM

At home as a dinner centerpiece or packed away in school lunches, our hams are steeped in a tradition of occasion and convenience.



### **KRC CHAMPAGNE HAM HALF**

A true sandwich necessity, this boneless, lean premium cut of leg meat is cured with traditional brine, then netted for smoking and cooking.

**CODE: 73445** | RW (≈3.50) | 4Units | 40 Cartons |



### **KRC SOCCERBALL HAM HALF**

The timeless soccerball ham. We've taken pork, formed it into the classic shape, then smoked it with natural wood for a tasty mild flavour and contrasting blush surface colour.

**CODE: 73422** | RW (≈3.50) | 4Units | 40 Cartons |



### **DON PREMIUM CHAMPAGNE HAM HALF**

DON Champagne Ham is made with carefully selected boneless pork legs. These are cured and wood smoked, creating tender, flavour-filled ham, perfect for an indulgent sandwich or platter.

**CODE: 88109** | RW (≈3.80) | 3Units | 40 Cartons |



### **DON TRIPLE SMOKED LEG HAM HALF**

Triple down on taste. Premium pork leg cuts are flavoured and crafted to deliver a deep, triple smoke finish.

**CODE: 60234** | RW (≈3.00) | 2Units | 72 Cartons |



### **KRC PREMIUM HAM VIRGINIAN HALF**

Easy to love. Gentle cooking and the natural smoke of this Virginian ham wins fans with ease, plus it comes in an easy to slice format.

**CODE: 90140** | RW (≈3.00) | 4Units | 40 Cartons |



### **DON VIRGINIAN HAM**

Savoury and succulent. Boneless, premium cuts of leg meat pressed into flat, ready-to-eat portions.

**CODE: 85682** | RW (≈3.90) | 2Units | 60 Cartons |



### **DON MELOSI BONELESS HALF LEG HAM**

Succulent and savoury. Our whole-muscle premium boneless leg ham boasts a smoke finish for a richer flavour profile.

**CODE: 77901** | RW (≈3.30) | 3Units | 40 Cartons |



### **DON DELI HAM**

Don Deli Ham is a perfect choice for sandwiches, made with tender pork leg meat and delicately flavoured to suit everyone's palate!

**CODE: 82765** | RW (≈3.00) | 3Units | 50 Cartons |



### **DON HONEY HAM HALF**

Hometown honey hero. Traditional cured leg ham with real Australian honey.

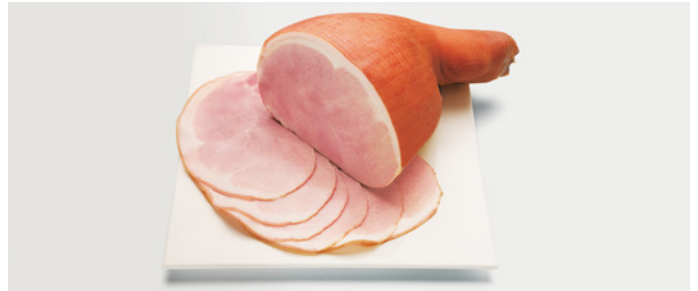
**CODE: 84650** | RW (≈3.00) | 3Units | 48 Cartons |



### **DON MELOSI DOUBLE SMOKED HAM HALF**

Full flavoured leg ham at its best. A whole-muscle boneless leg ham double smoked to smooth, smoky perfection. An easy to carve, premium ham.

**CODE: 30933** | RW (≈3.00kg) | 4Units | 40 Cartons |



### **KRC EASY CUT LEG HAM**

A semi-boneless centerpiece leg ham, netted into shape, cured, smoked and cooked with only the hock bone remaining.

**CODE: 90196** | RW (≈8.50) | 1Unit | 40 Cartons |



### **KRC HAM OFF THE BONE**

Made from premium quality Australian pork leg which is cured and traditionally hand crafted.

**CODE: 91061** | RW (≈8.5) | 2Units | 40 Cartons |

### **DON PRESSED LEG HAM**

Boneless leg ham with a crowd-pleasing flavour profile. The ham is pressed into its distinctive rippled shape.

**CODE: 43303** | RW (≈4.25) | 2Units | 60 Cartons |



### **DON MELOSI BONELESS FULL LEG HAM**

The iconic DON<sup>®</sup> ham. Renowned for its distinct light smoke flavour and whole muscle texture, Melosi full leg ham is a deli staple ready to be easily sliced and served.

**CODE: 35511** | RW (≈5.75) | 2Units | 40 Cartons |

### **KRC 4X4 SHOULDER HAM**

A sandwich cornerstone. Shoulder meat is cured, cooked and pressed into a convenient 4x4 shape, ready to slice and serve.

**CODE: 79210** | 3.9kg | 2Units | 60 Cartons |

# SLICED & SHAVED MEATS



CODE: 90442  
KRC VIRGINIAN HAM SLICED



### KRC VIRGINIAN HAM SLICED

Loved by all. This gently cooked, sliced Virginia ham wins fans with ease and comes in a moulded D-shape for easy flavour hits on toasties and sandwiches.

**CODE: 90442** | 1kg | 4Units | 90 Cartons |



### KRC PREMIUM LEG HAM SHAVED

Premium flavour finely shaved. Choice leg cuts gently cured and thinly shaved give this ham a well rounded, approachable flavour suitable for any occasion.

**CODE: 91421** | 1kg | 4Units | 60 Cartons |



### DON ENGLISH LEG HAM SLICED 97% FAT FREE

Lunches are made of this. Lean leg meat cooked to perfection makes this ham the backbone of lunch menus across Australia.

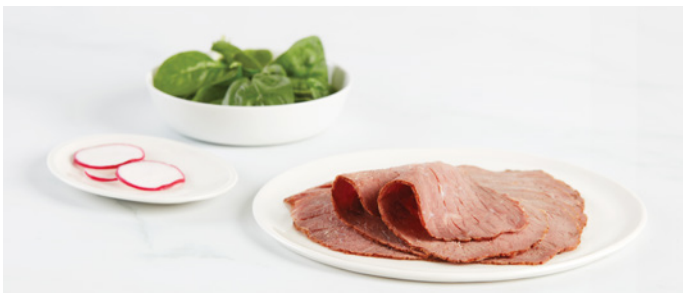
**CODE: 63102** | 1kg | 8Units | 60 Cartons |



### KRC SILVERSIDE SLICED

Convenience plus. Prepared from whole muscle beef that's cured and slow-cooked, this sliced KR Castlemaine® Sliced Silverside is ready when you need it.

**CODE: 91567** | 1kg | 4Units | 96 Cartons |



### KRC ROAST BEEF SHAVED

Ready for lunch. This full muscle roast beef is loaded with satisfying beef flavour and comes shaved in a convenient pack, making it ideal for sandwiches.

**CODE: 91568** | 1kg | 4Units | 96 Cartons |

### KRC HAM SHAVED

Gently flavoured and approachable. This pork is cured, cooked and thinly shaved, making it a subtle addition to any dish.

**CODE: 91414** | 1kg | 4Units | 60 Cartons |



### DON HARDWOOD SMOKED SHAVED HAM

A sandwich heavyweight, this thick-shaved leg ham is made using choice pork leg cuts cured and smoked with real Australian hardwood chips.

**CODE: 82951** | 1kg | 4Units | 60 Cartons |



# SALAMI

Boldly spiced and boasting mouth-watering textures, our salami is sure to deliver that satisfying sensation.



## KRC MILD SALAMI THINLY SLICED

Fine and mild. Delicately chopped pork and beef combined with gentle seasoning and subtle smoking make this smooth, thinly sliced salami an everyday ingredient.

**CODE: 91447** | 1kg | 4Units | 90 Cartons |

## KRC HOT SALAMI THINLY SLICED

This thinly sliced salami is no pushover in the flavour department, bringing generous amounts of taste and spice to the table.

**CODE: 91448** | 1kg | 4Units | 90 Cartons |



## DON WHITE HUNGARIAN SALAMI

Mild, savoury, and satisfying. This White Hungarian Salami combines finely cut pork and beef with hints of garlic, paprika and smoke for a very approachable eating experience. Look out for its distinctive white casing.

**CODE: 84560** | RW (≈1.40) | 4Units | 96 Cartons |

## DON HOT HUNGARIAN SALAMI

The Hungarian favourite with extra kick. Take our much-loved DON® Hungarian Salami made from finely cut pork and beef, add paprika, hot chilli and you have a savoury, fiery and delicious salami.

**CODE: 84561** | RW (≈1.40) | 4Units | 96 Cartons |



**CODE: 91882**  
**KRC CALABRESE SALAMI SLICED**

# BEEF & OTHER MEATS



**CODE: 90221**  
**KRC BEEF ROAST HALF**



## **KRC ROAST BEEF HALF**

A speedy carvery solution. When you need a whole roast beef ready in an instant, this roast beef is your best bet. Gently seasoned, all that's left to do is slice and serve.

**CODE: 90221** | RW (≈2.10) | 4Units | 48 Cartons |



## **KRC AUSSIE SILVERSIDE HALF**

This classic silverside is prepared from select cuts of beef that are cured, slow cooked and vacuum packed for your convenience. Perfect for lunches and with pickles.

**CODE: 74122** | RW (≈3.30) | 3Units | 48 Cartons |



### **KRC ROAST PORK UNSEASONED HALF**

A deli favourite. The best cuts of pork are trimmed, cured, and ready to bolster any meal.

**CODE: 90147** | RW (≈3.00) | 4Units | 40 Cartons |

### **DON OVEN ROASTED TURKEY BREAST FILLET**

A feather in the cap of any dinner these half turkey breast fillets are marinated, seasoned and oven roasted to perfection.

**CODE: 55526** | RW (≈1.80) | 6Units c 48 Cartons |



**CODE: 101391**  
**CASTELLINI CHORIZO SLICED**

At Don® and KR Castlemaine, we know the way to your customers' hearts is through consistently delicious pizzas. And to make the perfect pizza, you need the best ingredients. Our famous smallgoods showcase authentic European recipes, quality cuts and magnificent flavours. Artfully placed or generously scattered, they're simply top of the pizza toppings.



**DON SHREDDED HAM**

Our generously-sized signature Shredded Ham is crafted using quality pork cuts to create the delicious foundation for any pizza, pasta or quiche recipe. Available in two pack sizes.

**Code: 85483** | 1.25kg  
4 Units | 96 Cartons

**Code: 83303** | 2.5kg  
2 Units | 96 Cartons



**KRC SHREDDED HAM**

This pizza topping classic makes preparation quick and easy. We shred quality, lean shoulder cuts to deliver a flavourful and versatile ingredient. Perfect for pasta and baking recipes too.

**Code: 91877** | 2.5kg | 2 Units | 96 Cartons



**KRC PEPPERONI SALAMI SLICED**

Our medium-heat Pepperoni is an Aussie icon. Carefully crafted using our time-honoured recipe, it treats pizza-loving taste buds to a delicious tangy-spicy flavour. Try it in pasta recipes too.

**CODE: 91881** | 1kg | 4 Units | 80 Cartons



**KRC CALABRESE SALAMI SLICED**

This authentic, hot and full-flavoured sliced Salami hails from the Calabrian region of Southern Italy and combines coarsely ground pork and beef with plenty of spices and crushed chilli.

**CODE: 91882** | 1kg | 4 Units | 80 Cartons

# PIZZA TOPPINGS

Our conveniently cut, succulent Pizza Toppings are downright essential for preparing those perfect slices.



## CASTELLINI MILD CALABRESE SALAMI SLICED

This mild Salami has a satisfying coarse texture and delicious, well-balanced flavour. Our original Calabrian recipe uses quality pork, salt and a special blend of spices.

**CODE: 101899** | 2kg | 2 Units | 90 Cartons



## CASTELLINI HOT CALABRESE SALAMI SLICED

Our authentic Calabrian recipe makes this coarse-textured, intensely spicy Salami a winner for hot meat-lover pizzas. We craft this gluten-free Calabrese using quality pork, chilli and amazing spices.

**CODE: 101390** | 2kg | 2 Units | 90 Cartons



## CASTELLINI CHORIZO SLICED

Made for meat lovers, this medium-heat Chorizo has a robust flavour profile infused with garlic, pepper and paprika. The spices add unique colour for maximum mouth-watering appeal.

**CODE: 101391** | 1kg | 4 Units | 90 Cartons



## CASTELLINI SHREDDED PIZZA TOPPING

This popular everyday pizza topping is crafted and shredded using quality ingredients for consistently flavoursome performance.

**CODE: 82057** | 2.5kg | 4 Units | 40 Cartons



## CASTELLINI PEPPERONI SALAMI SLICED

The iconic pizza salami, this product delivers on taste and visual appeal. Designed to perform for the foodservice professional.

**CODE: 101389** | 2kg | 2 Units | 90 Cartons

# SAUSAGES & FRANKS

While they might differ in size and shape, our sausages and franks are hotdog stars that bring the flavour across the board.



CODE: 88652

KRC OL 'SMOKEY CONTINENTAL 8" SKINLESS FRANKFURT



### **KRC OL 'SMOKEY CONTINENTAL 8" SKINLESS FRANKFURT**

Perfect for creating any hot dog combination! Made from selected meats smoked and cooked, with the casing removed to leave a skinless 8-inch Frankfurt.

**CODE: 88652** | 2.5kg | 4Units | 60 Cartons |



### **KRC OL 'SMOKEY CONTINENTAL 10" SKINLESS FRANKFURT**

Jumbo size 10-inch frankfurts made from selected meats smoked and cooked with the casing removed for a delicious way to satisfy any hunger.

**CODE: 98192** | 2.5kg | 4Units | 60 Cartons |



### **DON LONG SKINLESS FRANKFURT**

Our DON® Long Skinless Frankfurts made from select meats blended with spices and ground to a fine texture are lightly smoked with a delicious flavour.

**CODE: 43202** | 2.5kg | 2Units | 120 Cartons |

### **DON SKIN-ON FRANKFURT**

DON® Skin-On Franks are mild flavoured and wood smoked, making them perfect for a game day cook up or a quick mid-week dinner everyone will love!

**CODE: 87031** | 2.5kg | 2Units | 96 Cartons |



### **KRC SKIN-ON FRANKFURT**

A universal classic. Selected meats and spices are blended, filled into a casing, and cooked to perfection to make these tried-and-tested treats.

**CODE: 79766** | 2.5kg | 2Units | 96 Cartons |



### **KRC RED SKINLESS 7" FRANKFURT**

Selected meats are blended with spices to produce a smooth-textured 7-inch skinless frankfurt with a distinctive red colour. Being lightly smoked gives this Frankfurt a delicious and delicate flavour.

**CODE: 98750** | 2.5kg | 4Units | 60 Cartons |

### **DON RED SKINLESS 10" FRANKFURT**

Lightly smoked and 10-inches long, this larger, skinless frankfurt uses selected meats blended with spices to produce a smooth texture and delicious flavour with a distinctive red colour.

**CODE: 79320** | 2.5kg | 2Units | 96 Cartons |

### **DON 10" SKINLESS CATERING FRANKFURT**

Mild, versatile and straight from the stadium. These extra-long franks are made from select meat cuts blended with mild spices to achieve a gentle, fine texture and flavour.

**CODE: 43216** | 1kg | 10Units | 48 Cartons |

### **DON VIENNESE FRANKFURT**

These traditional frankfurts are mildly seasoned, filled into a natural casing, cooked and smoked for their distinctive red colour.

**CODE: 43201** | 2.5kg | 2Units | 90 Cartons |



### **DON SKINLESS COCKTAILS FRANKFURT**

A mini flavour hit. DON® Skinless Cocktail Frankfurts are easy to love. Made from selected meats and blended to a very fine texture with spices, they have a mild, smokey and moreish flavour. Party or function favourite.

**CODE: 43212** | 2.5kg | 2Units | 96 Cartons |



### **KRC SAVELOYS**

With a distinctive larger diameter, the Saveloy is lightly spiced and often comes battered in fish and chip shops.

**CODE: 88649** | 2.5kg | 2Units | 90 Cartons |



### **DON SKIN-ON COCKTAIL FRANKFURT**

Flavoursome finger-food. These perfect party snacks are flavoured with spices, filled into a casing, and cooked to perfection.

**CODE: 87030** | 2.5kg | 2Units | 96 Cartons |



### **WATSONIA BLANCHED SAUSAGE**

Our delicious and juicy Thick Blanched Sausages are the ideal roadhouse menu solution.

**CODE: 30416** | 2.5kg | 2Units | 80 Cartons |



### **KRC SKIN-ON COCKTAIL FRANKFURT**

Bite sized fun. A blend of select meats with spices means these cocktail franks are easy to pick up and please even the fussiest of eaters.

**CODE: 79767** | 2.5kg | 2Units | 90 Cartons |



### **KRC BREAKFAST CHIPOLATA**

Great on the breakfast menu. These small, pork sausages contain real parsley. They're deliciously savoury & ideal for hearty breakfast menus.

**CODE: 90206** | 2.5kg | 2Units | 90 Cartons |



**CODE: 87030**  
**DON SKIN-ON COCKTAIL FRANKFURT**

# BULK KNOBS

## MELOSI MORTADELLA

The taste of Italian tradition. DON® Mortadella is created from select cuts of meat, ground to a very fine mince, then cooked with pieces of pork fat for that signature look and great taste.

**CODE: 30874** | RW (≈4.50) | 2Units | 60 Cartons |

## DON STRASBURG

An Australian invention using a select mix of pork, traditional spices and herbs blended, smoked and cooked to perfection - a true DON® classic that is perfect in a sandwich.

**CODE: 43607** | 2kg | 4Units | 80 Cartons |

## HUTTONS DEVON CHUB

An iconic schoolyard staple. Our Devon Chub uses select finely blended meats and spices.

**CODE: 83140** | 3kg | 2Units | 72 Cartons |



# CONTINENTALS

CODE: 91864  
OTTO WURTH SPANISH CHORIZO



### OTTO WURTH CHEESE KRANSKY

A savoury sensation. This Kransky has diced hi-melt cheese mixed in and is great as a snack or gourmet hot dog.

**CODE: 90914** | 2.5kg | 2Units | 80 Cartons |



### DON CHEDDAR KRANSKY

Fantastic hot from the grill. The real cheddar cheese in DON® Kransky just begs for melting. This lightly smoked blend of meats with continental spices stands up well on its own.

**CODE: 79229** | 2.5kg | 2Units | 96 Cartons |



### OTTO WURTH SPANISH CHORIZO

A taste of Spain in an instant. Adored by many, the big bold smoky flavours of our Chorizo come from a blend of selected quality meats, beef, paprika and spices.

**CODE: 91864** | 2.5kg | 1Unit | 120 Cartons |

### DON CHILLI CHEESE KRANSKY

Cheese, chilli and so much flavour. This lightly smoked blend of select meats, real cheese means this Kransky is fantastic on its own or cooked in dishes.

**CODE: 79219** | 2.5kg | 2Units | 96 Cartons |



### DON KABANA

DON®'s iconic Kabana in the Deli. Made with our traditional recipe of coarsely ground selected meats, beef and blended with spices. Smoked, full of flavour and perfect for entertaining or as a tasty snack straight from the fridge.

**CODE: 81908** | 2kg | 4Units | 60 Cartons |

### DON KABANA

**CODE: 43606** | RW (≈4.00) | 2Units | 60 Cartons |



### KRC RED KABANA 12"

Savoury and spiced. Made with coarsely cut blended meats and added spices this sausage is smoked and comes in a distinctive red casing.

**CODE: 88651** | RW (≈2.5) | 4Units | 60 Cartons |

### CHAPMANS KABANA

What do you get when you hardwood smoke select cuts of ground meats and superb spices? An entertaining mainstay that's welcome on any plate or platter.

**CODE: 29132** | 2.5kg | 2Units | 96 Cartons |



---

FOODSERVICE

For more information about the full range of foodservice products, contact our Customer Service Team on **1800 806 381**

To place an order, contact your DON® Smallgoods Foodservice Representative.